

ALFIE

1st Eb Alto Saxophone

Lyric by HAL DA...
Music by BURT BACHARACH
Arranged by MIKE LEWIS

Slowly

Solo



(A) Solo

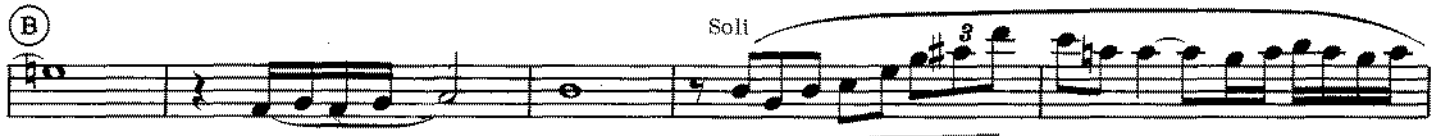


mf

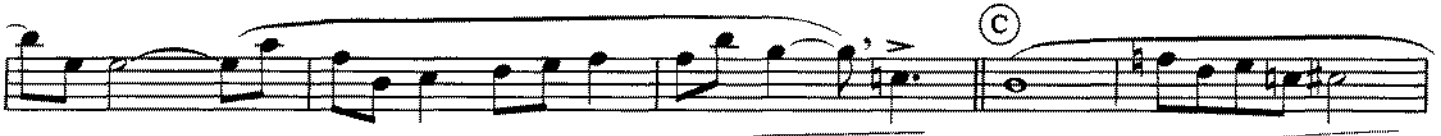
Solo



mf



(B) Solo



mf



(C)



(D) mp



f



mf



f

Coda



Copyright © 1966 by Famous Music Corporation, New York, N.Y.
This arrangement Copyright © 1970 by Famous Music Corporation Used by Permission
International Copyright Secured Made in U.S.A. All Rights Reserved
The use of the lyrics of this song with any other music is expressly prohibited

ALFIE

3rd E♭ Alto Saxophone

Lyric by HARRY DAVID
Music by BURT BACHARACH
Arranged by MIKE LINDSAY

10

Slowly

(A)

(B)

(D)

⊕ Coda

From The Paramount Picture "ALFIE"

ALFIE

2nd B \flat Tenor Saxophone

Lyric by HAL DAVID
Music by BURT BACHARACH
Arranged by MIKE LEWIS

10

Slowly

ff mp

(A) mf pp

mf

(B) Solo

(C)

(D) mp f

subtone pp

To Coda

D. S. al Coda mf

f

Coda

Copyright © 1966 by Famous Music Corporation, New York, N.Y.
 This arrangement Copyright © 1970 by Famous Music Corporation Used by Permission
 International Copyright Secured Made in U.S.A. All Rights Reserved
 The use of the lyrics of this song with any other music is expressly prohibited

ALFIE

4th B \flat Tenor Saxophone

Lyric by HAL HAYD
Music by BURT BACHARACH
Arranged by MCKE L. LEWIS

10

Slowly

ff mp

(A) mf pp

mf

(B) Soli

(C)

(D) mp f

subtone

pp

To Coda

D. S. al Coda mf

f Coda

From The Paramount Picture "ALFIE"

ALFIE

5th E \flat Baritone Saxophone

Lyric by HAL DAVID
Music by BURT BACHAROF
Arranged by MIKE LEWIS



Slowly

(A)

(B)

Soli

(C)

(D)

To Coda

D. S. al Coda

Coda

Copyright © 1966 by Famous Music Corporation, New York, N.Y.
 This arrangement Copyright © 1970 by Famous Music Corporation Used by Permission
 International Copyright Secured Made in U.S.A. All Rights Reserved
 The use of the lyrics of this song with any other music is expressly prohibited

ALFIE

Lyric by HAL ALPERT
Music by BURT BACHAROF
Arranged by MIKE LEWIS

10

1st Trombone

Slowly

(A)

(B)

(C)

(D)

To Coda

D. S. al Coda

Coda

ALFIE

Lyric by HENRY DUNSTON
Music by BURTON BACHARACH
Arranged by MIKE LEWIS

10

2nd Trombone

Slowly

ff *mp*

(A) *mp*

Unison Soli
No Vib.

(B) *ppp* *mf*

mf

(C)

(D) *f*

pp

pp

mf *f*

To Coda ⊕

D. S. al ⊕ Coda

⊕ Coda

ALFIE

10

3rd Trombone

Lyric by HAL PERLIN
Music by BURT BACHARACH
Arranged by MIKE LEWIS

Slowly

(A) 2 Unison Soli
No Vib. mp

(B)

(C)

(D) 2 f

pp

To Coda ⊕

mf

f

D. S. al ⊕ Coda

A A §

⊕ Coda

ALFIE

10

4th Trombone

Lyric by HENRY DAVID LASKER
Music by BURT BACHARACH
Arranged by MIKE LEWIS

Slowly

(A)

(C)

(D)

To Coda ⊕

D. S. al ⊕ Coda §

⊕ Coda

From The Paramount Picture "ALFIE"

ALFIE

10

1st B \flat Trumpet

Lyric by HAL PERLIN
Music by BURT BACHARACH
Arranged by MIKE LEWIS

Slowly
Soli

(A) 10 (B) No Vib. mp

(C) lead 3

(D) mp f

To Coda ⊕ (open) mf To cup mute (for Coda) f

D. S. al ⊕ Coda

Coda (cup mute) ⊕

Copyright © 1966 by Famous Music Corporation, New York, N.Y.
 This arrangement Copyright © 1970 by Famous Music Corporation Used by Permission
 International Copyright Secured Made in U.S.A. All Rights Reserved
 The use of the lyrics of this song with any other music is expressly prohibited

ALFIE

10

2nd B \flat Trumpet

Lyric by HAL DAVID
Music by BURT BACHARACH
Arranged by MIKE LEWIS

Slowly

ff *mp*

(A) 10 (B) No Vib.

mp

3 Unis.

(C)

3 3 3

mf

(D)

3

f

3

f

To Coda (open)

mf *f*

To cup mute (for Coda)

D. S. al Coda

f

Coda (cup mute)

f

ALFIE

10

3rd B \flat Trumpet

Lyric by HAL DAVID
Music by BURT BACHARACH
Arranged by MIKE LEWIS

Slowly

ff *mp*

(A) **10** (B) No Vib. *mp*

mf Unis.

(C)

(D) *mp* *f*

3

To Coda (open) *mf* To cup mute (for Coda) *f*

D. S. al Coda

Coda (cup mute)

ALFIE

4th B \flat Trumpet

Lyric by HAL DAVID
Music by BURT BACHARACH
Arranged by MIKE LEWIS

10

Slowly

(A) 10 (B) No Vib. mp

3 Unis. mf

(C) 3 3 3 3

(D) mp f

3

To Coda (open) mf f

To cup mute (for Coda)

D. S. al Coda

Coda (cup mute)

From The Paramount Picture "ALFIE"

ALFIE

Lyric by HAL DAVID
Music by BURT BACHARACH
Arranged by MIKE LEWIS

Conductor

Slowly

Brass
Sax
ff
Cmaj9
Ebmaj9
Abmaj9
p
Dm7 G7-9
Trb.

f
Cmaj7
Dm7/Gbass
Cmaj7
Em7
A7
Trb.

Sax. Soli
pp
Dm9
Em7 Am7 Dm7
F#dim
Dm7

(B) Trpts.
Dm7 G9 G13-9 Cmaj9
Trb.
C9

Altos

Sax.
Em7 A7 Dm9
Em7 Am7 Dm7

10

(C) Tutti

Sax. Brass

F#dim Bm7 Bbm7 Eb7 Am7 Bm7

Am7 Em9 Am7 Bm7 Bbm7 Am7 Dm7 G7 G7 Dm7

Tutti

(D) Sax. Brass

Cmaj9 Dm7/Gbass F#m7-5 F9 Em7 Am7 F#m7-5 F9

Tutti Sax. subtone

Em7 Am7 D7-5 D9-5 *pp* Trb. F#dim Dm7

Tutti Sax. To Coda Brass

C7-9 *mf* Dm7 C7-9 Trb. C

D. S. al Coda

Sax. *f* Dm7/Gbass

Cmaj7

Coda Muted Trpts.

Cmaj7 C₉+11

ALFIE

Piano

Lyric by HAL DAVID
Music by BURT BACHARACH
Arranged by MILDRED LEWIS

Slowly

(A)

Musical notation for section A, first system. Treble clef, C major key signature, 4/4 time. Chords: Cmaj7, Ebmaj9, Abmaj9, Dm7/Gbass, G13-9, Cmaj7 mf, Dm7/Gbass.

Musical notation for section A, second system. Chords: Cmaj9, Em7, A7, Dm9, Em7, Am7, Dm7.

(B)

Musical notation for section B, first system. Chords: F#dim, Dm7, Dm7, G13-9, Cmaj7, Dm7/Gbass.

Musical notation for section B, second system. Chords: C⁶₉, Em7, A9, Dm9, Em7, Am7, Dm7.

(C)

Musical notation for section C, first system. Chords: F#dim, Bm7, Bbm7 Eb7, Am7/Dbass, Em7.

Am7 Em7 Am7 Bm7 Bbm7 Eb7 Am7/Dbass

(D)

Cmaj9 Dm7/Gbass F#m7-5 F9(13) Em7 Am7

F#m7-5 F9(13) Em7 Am7 D7-9 D9-5 Dm7/Gbass F#dim

pp

To Coda ⊕

Dm7/Gbass C7-9 Dm7 C7-9

D. S. al ⊕ Coda

Cmaj7 Dm7/Gbass

⊕ Coda

8va

C6 C9+11

ALFIE

Guitar

Lyric by HAL PERL
Music by BURT BACHAROF
Arranged by MIKE LEWIS

10

Slowly

Cmaj7 Ebmaj9 Abmaj9 Dm7/Gbass G7-9

(A)

Cmaj7 Dm7/Gbass Cmaj9 Em7 A7 Dm9

Em7 Am7 Dm7 F#dim Dm7 Dm7 G13(9) G13-9

(B)

Cmaj7 Dm7/Gbass C6 Em7 A9 Dm9

Em7 Am7 Dm7 F#dim (C) Bm7 Bbm7 Eb7 Am7/Dbass

Bm9 Bm7 Am7 Em7 Am7 Bm7 Bbm7 Eb7 Am7/Dbass

(D)

Cmaj9 Dm7/Gbass Dm7 G7 F#m7-5 F9 Em7 Am7

F#m7-5 F9 Em7 Am7 D7-5 D9-5 Dm7/Gbass F#dim

p

Dm7/Gbass C7-9 Dm7 Dm7/Gbass C7-9 To Coda ⊕ Cmaj7 C6

Cmaj7 D. S. al ⊕ Coda Dm7/Gbass

⊕ Coda Cmaj7 C6 C9+11

ALFIE



Bass

Lyric by HAL DAVID
Music by BURT BACHARACH
Arranged by MIKE LEWIS

Slowly

ff *mp*

(A)

(B)

(C)

(D)

To Coda ⊕

p

⊕ Coda

D. S. al ⊕ Coda

ALFIE

Lyric by HAL DAVID
Music by BURT BACHARACH
Arranged by MIKE LEWIN

Drums

Slowly
Mallet on Cym.

to Sticks

(A)

Musical notation for section A, first line. Bass clef, common time. Starts with mallet on cymbal (ff), then switches to sticks (mp).

Musical notation for section A, second line. Continuation of the first line with four-measure rests.

Musical notation for section B. Starts with a circled B. Continuation of the pattern with a triplet and mf dynamic.

Musical notation for section C. Starts with a circled C. Continuation of the pattern with mf dynamic.

Musical notation for section D. Starts with a circled D. Continuation of the pattern with mp and f dynamics.

Musical notation for section E. Continuation of the pattern with pp dynamic.

Musical notation for section F. Continuation of the pattern with "To Coda" marking.

Musical notation for section G. Starts with "D. S. al Coda" and a circled Coda symbol. Continuation of the pattern with ff dynamic.

Musical notation for section H. Starts with "Coda" and a circled Coda symbol. Continuation of the pattern.

Vocal

ALFIE

Lyric by HAL DAVID
Music by BURT BACHARACH
Arranged by MIKE LEWIS

Slowly 4 A

What's it all a - bout Al - fie? — Is it just for the moment we

live? What's it all a - bout — when you sort it out — Al - fie? —

Are we meant to take more than we give or are we meant to be kind — And if

B

on - ly fools are kind Al - fie — Then I guess it is wise to be cruel And if

life be - longs — on - ly to the strong — Al - fie — What will you lend on an old

C

gold - en rule? As sure as I be - lieve there's a heav - en a - bove Al - fie

I know there's some - thing much more. Some - thing e - ven non - be - liev - ers

D

can be - lieve in I be - lieve in love Al - fie — With - out true love we just ex -

ist Al - fie Un - til you find the love you've missed you're noth - ing Al - fie

When you walk let your heart lead the way, and you'll find love an - y day Al - fie,

To Coda \oplus D. S. al \oplus Coda \S Coda \oplus

Al - fie — I be - lieve in you Al - fie, —